

TammiTohelointi



Oil Pattern Distance: 43 Feet **Reverse Brush Drop:** 35 Feet **Oil Per Board:** 50 uL
Forward Oil Total: 10.55 mL **Reverse Oil Total:** 12.45 mL **Volume Oil Total:** 23 mL
Forward Boards Crossed: 211 Boards **Reverse Boards Crossed:** 249 Boards **Total Boards Crossed:** 460 Boards

	Start	Stop	Loads	Speed	Crossed	Start	End	Feet	T.Oil
1	3L	3R	2	10	70	0.0	1.4	1.4	3500
2	7L	7R	2	10	54	1.4	4.2	2.8	2700
3	11L	11R	3	18	57	4.2	11.8	7.6	2850
4	13L	13R	2	22	30	11.8	18.0	6.2	1500
5	2L	2R	0	26	0	18.0	33.0	15.0	0
6	2L	2R	0	30	0	33.0	43.0	10.0	0

Forward Reverse More

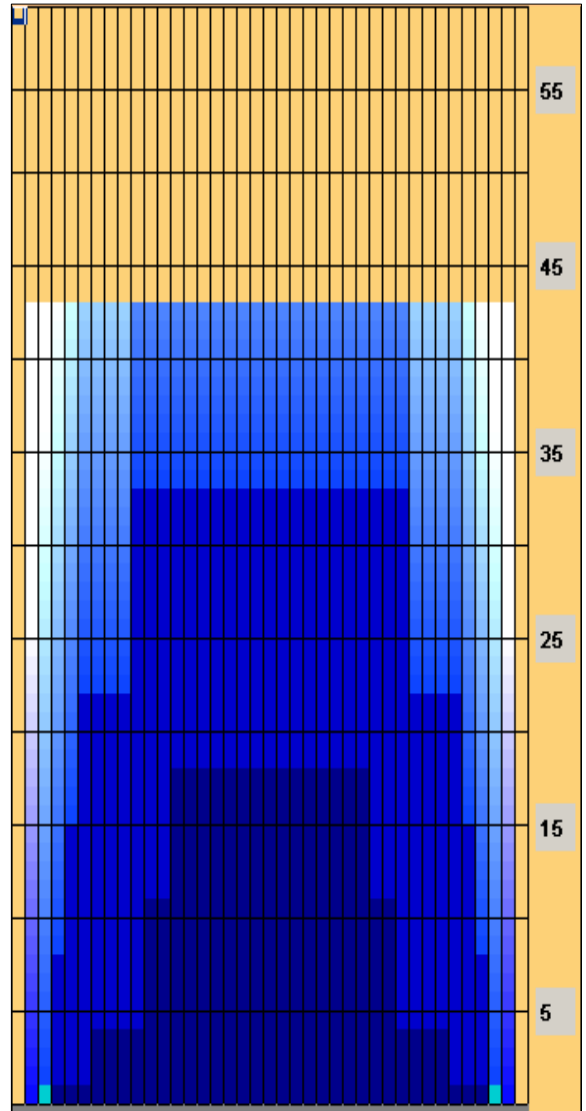
	Start	Stop	Loads	Speed	Crossed	Start	End	Feet	T.Oil
1	2L	2R	0	30	0	43.0	33.0	-10.0	0
2	10L	10R	3	26	63	33.0	22.0	-11.0	3150
3	6L	6R	2	26	58	22.0	14.7	-7.3	2900
4	5L	5R	2	22	62	14.7	8.5	-6.2	3100
5	4L	4R	2	18	66	8.5	3.4	-5.1	3300
6	2L	2R	0	10	0	3.4	0.0	-3.4	0

Forward Reverse More

Conditioner:
 Type In or Select
 One

 TransferType:
 Type In or Select
 One

- Forward
- Reverse
- Combined
- Buff



Item	3L-7L:18L-18R	8L-12L:18L-18R	13L-17L:18L-18R	18L-18R:17R-13R	18L-18R:12R-8R	18L-18R:7R-3R
Description	Outside Track:Middle	Middle Track:Middle	Inside Track:Middle	Middle: Inside Track	Middle:Middle Track	Middle:Outside Track
Track Zone Ratio	3	1.38	1	1	1.38	3

