

OnSiisKevät...



Oil Pattern Distance: 44 Feet	Reverse Brush Drop: 34 Feet	Oil Per Board: 50 uL
Forward Oil Total: 13.25 mL	Reverse Oil Total: 10.2 mL	Volume Oil Total: 23.45 mL
Forward Boards Crossed: 265 Boards	Reverse Boards Crossed: 204 Boards	Total Boards Crossed: 469 Boards

	Start	Stop	Loads	Speed	Crossed	Start	End	Feet	T.Oil
1	2L	2R	1	10	37	0.0	0.0	0.0	1850
2	4L	4R	1	10	33	0.0	1.4	1.4	1650
3	6L	6R	1	14	29	1.4	3.3	1.9	1450
4	9L	9R	2	18	46	3.3	8.4	5.1	2300
5	10L	10R	3	22	63	8.4	17.7	9.3	3150
6	11L	11R	3	26	57	17.7	28.7	11.0	2850
7	2L	2R	0	30	0	28.7	44.0	15.3	0

Forward Reverse More

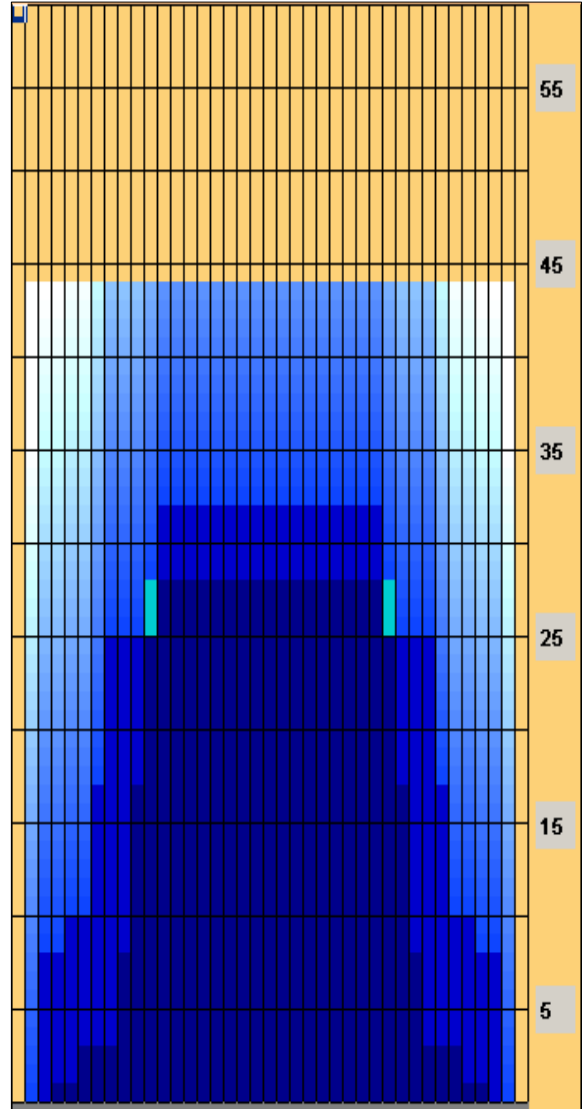
	Start	Stop	Loads	Speed	Crossed	Start	End	Feet	T.Oil
1	2L	2R	0	30	0	44.0	32.0	-12.0	0
2	12L	12R	2	26	34	32.0	24.7	-7.3	1700
3	8L	8R	2	26	50	24.7	17.4	-7.3	2500
4	7L	7R	2	26	54	17.4	10.1	-7.3	2700
5	5L	5R	1	18	31	10.1	7.6	-2.5	1550
6	3L	3R	1	10	35	7.6	6.2	-1.4	1750
7	2L	2R	0	10	0	6.2	0.0	-6.2	0

Forward Reverse More

Conditioner:
Type In or Select One

TransferType:
Type In or Select One

- Forward
- Reverse
- Combined
- Buff



Item	3L-7L:18L-18R	8L-12L:18L-18R	13L-17L:18L-18R	18L-18R:17R-13R	18L-18R:12R-8R	18L-18R:7R-3R
Description	Outside Track:Middle	Middle Track:Middle	Inside Track:Middle	Middle: Inside Track	Middle:Middle Track	Middle:Outside Track
Track Zone Ratio	4.52	1.36	1	1	1.36	4.52

