

Jbc Talviturnaus 2022



| | | |
|---|---|---|
| Oil Pattern Distance: 41 Feet | Reverse Brush Drop: 36 Feet | Oil Per Board: 45 uL |
| Forward Oil Total: 11.475 mL | Reverse Oil Total: 10.845 mL | Volume Oil Total: 22.32 mL |
| Forward Boards Crossed: 255 Boards | Reverse Boards Crossed: 241 Boards | Total Boards Crossed: 496 Boards |

| | Start | Stop | Loads | Speed | Crossed | Start | End | Feet | T.Oil |
|---|-------|------|-------|-------|---------|-------|------|------|-------|
| 1 | 2L | 2R | 2 | 10 | 74 | 0.0 | 1.4 | 1.4 | 3330 |
| 2 | 7L | 7R | 1 | 14 | 27 | 1.4 | 3.3 | 1.9 | 1215 |
| 3 | 10L | 10R | 3 | 14 | 63 | 3.3 | 9.2 | 5.9 | 2835 |
| 4 | 11L | 11R | 3 | 18 | 57 | 9.2 | 16.8 | 7.6 | 2565 |
| 5 | 12L | 12R | 2 | 18 | 34 | 16.8 | 21.9 | 5.1 | 1530 |
| 6 | 2L | 2R | 0 | 18 | 0 | 21.9 | 28.0 | 6.1 | 0 |
| 7 | 2L | 2R | 0 | 26 | 0 | 28.0 | 34.0 | 6.0 | 0 |
| 8 | 2L | 2R | 0 | 30 | 0 | 34.0 | 41.0 | 7.0 | 0 |

Conditioner:
Type In or Select One

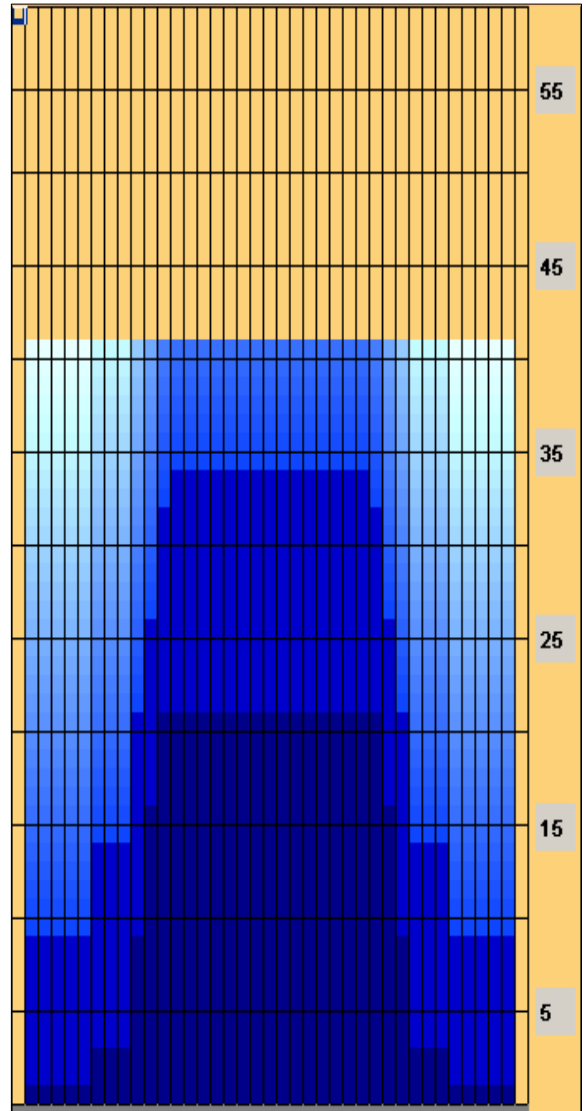
TransferType:
Type In or Select One

- Forward
- Reverse
- Combined
- Buff

Forward Reverse More

| | Start | Stop | Loads | Speed | Crossed | Start | End | Feet | T.Oil |
|---|-------|------|-------|-------|---------|-------|------|------|-------|
| 1 | 2L | 2R | 0 | 30 | 0 | 41.0 | 34.0 | -7.0 | 0 |
| 2 | 13L | 13R | 1 | 18 | 15 | 34.0 | 31.5 | -2.5 | 675 |
| 3 | 12L | 12R | 2 | 18 | 34 | 31.5 | 26.4 | -5.1 | 1530 |
| 4 | 11L | 11R | 2 | 18 | 38 | 26.4 | 21.3 | -5.1 | 1710 |
| 5 | 10L | 10R | 3 | 18 | 63 | 21.3 | 13.7 | -7.6 | 2835 |
| 6 | 7L | 7R | 2 | 18 | 54 | 13.7 | 8.6 | -5.1 | 2430 |
| 7 | 2L | 2R | 1 | 14 | 37 | 8.6 | 6.7 | -1.9 | 1665 |
| 8 | 2L | 2R | 0 | 10 | 0 | 6.7 | 0.0 | -6.7 | 0 |

Forward Reverse More



| Item | 3L-7L:18L-18R | 8L-12L:18L-18R | 13L-17L:18L-18R | 18L-18R:17R-13R | 18L-18R:12R-8R | 18L-18R:7R-3R |
|------------------|----------------------|---------------------|---------------------|----------------------|---------------------|----------------------|
| Description | Outside Track:Middle | Middle Track:Middle | Inside Track:Middle | Middle: Inside Track | Middle:Middle Track | Middle:Outside Track |
| Track Zone Ratio | 6.11 | 1.77 | 1 | 1 | 1.77 | 6.11 |

